



Meet the *StartUp Research* Tutors & Mentors, by Order of Appearance



Nuno Arantes-Oliveira, Associate Professor, NOVA SBE; Partner of Clinical Research Ventures (CRV):
<https://www.novasbe.unl.pt/en/faculty-research/faculty/faculty-detail/id/152/nuno-arantes-e-oliveira>.



Miguel Santos, Invited Associate Professor, ITQB NOVA. Director of Innovation & Technoloy Transfer @ NIMSB NOVA;
Co-Founder of *Active Site Consulting in Innovation Management Lda.* and *Regenera Sciences, Corp, USA*
Start-Up Research Coordinator: <https://www.linkedin.com/in/miguel-santos-1755295/>



Ligia Gata, Founder and IP & Innovation Manager - Intellectual Property Solutions – IPS, BE.
(<https://www.linkedin.com/in/l%C3%ADgia-gata-0411a012/?originalSubdomain=pt>).



Dipanjan Nag, Professor of Practice Business & Science, Rutgers University, NJ, USA; President at Innovaito, LLC; USA:
<https://www.linkedin.com/in/dipanjanag/>



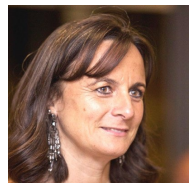
Meet the *StartUp Research* Tutors & Mentors, by Order of Appearance



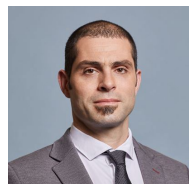
Susana Carvalho, Invited Associate Professor, NOVA FCSH. Founder and Managing Partner of *Culture Setting*:
<https://business-setting.com/en/culture-leadership/>



Paula Costa, VC Head of Regulatory Affairs, Bial, PT: <https://www.linkedin.com/in/paula-costa-6420b911/?originalSubdomain=pt>



Rita Bárcia, VC Process Development & Operations, *SIRPant Immunotherapeutics*, Boston Area, USA:
<https://www.linkedin.com/in/rita-barcia-086b734/>



Pedro Neves, Full Professor at Nova SBE: <https://www.novasbe.unl.pt/en/faculty-research/faculty/faculty-detail/id/75/pedro-neves>



Meet the *StartUp Research* Tutors & Mentors, by Order of Appearance



Rita Mendes, Biotech Venture Builder at NLC Health, NL; Co-Founder of Oh My Science, PT: <https://nlc.health/team/rita-mendes/>



Miguel Lebre de Freitas, Assistant Professor, Nova SBE: <https://www.novasbe.unl.pt/en/faculty-research/faculty/faculty-detail/id/61/miguel-lebre-de-freitas>



José Pereira Leal, Founder & Partner, CEO at Ophiomics: <https://www.linkedin.com/in/pereiraleal/?originalSubdomain=pt>



António Marinho Torres, Invited Associate Professor, NOVA SBE: <https://www.novasbe.unl.pt/pt/cursos/formacao-de-executivos/docentes/docente/id/14/antonio-marinho-torres>



Meet the *StartUp Research* Tutors & Mentors, by Order of Appearance



Paulo Soares de Pinho, Academic Director of MIT and Associate Professor at NOVA SBE:

<https://www.novasbe.unl.pt/en/programs/executive-education/faculty/faculty/id/5/paulo-soares-de-pinho>



Orfeu Flores, Founder & CEO of Grupo Stab: <https://www.linkedin.com/in/orfeu-flores-5b521457/>



Nuno Prego Ramos, President & CEO at CellMabs: <https://www.linkedin.com/in/npregoramos/>



Tomás Baena, Founder and Managing Director of InBodyLanguage: <https://www.linkedin.com/in/tomas-baena/>



Meet the *StartUp* Research Tutors & Mentors, by Order of Appearance



John Freshley, Founder and Partner of Bioscience Navigators, Michigan, USA; Fund Advisor at Cantilever Investors:
<https://www.linkedin.com/in/johnfreshley/>



Susana Melquíades, CSO at Pharmis Biofarmacêutica: <https://www.linkedin.com/in/susana-melqu%C3%ADades-filipe-ba977b4/?originalSubdomain=pt>



Hélder Cruz, CSO at Good Dog Food; Co-Founder, CSO & Managing Director at TheraProteins:
https://www.linkedin.com/in/helder-cruz-7721186/?original_referer=https%3A%2F%2Fwww%2Egoogle%2Ecom%2F&originalSubdomain=uk



Isabel Mendes, Professional (Freelance) Copy Writer: https://www.linkedin.com/in/isabel-motta-mendes-852a2815/?original_referer=https%3A%2F%2Fwww%2Egoogle%2Ecom%2F&originalSubdomain=pt